

THE CHALET

Innsbrook founder Ed Boyce was inspired to build A-frame chalets during his years living in Aspen, Colorado. It was there that he admired the vaulted interiors, rustic feel and wall of glass that brought all the surrounding natural beauty inside. So he brought the Aspen A-frame to the rolling hills of Missouri wine country, and Innsbrook was born.

Today, the A-frame has come a long way from the simple "A's" that were built in 1971 when Innsbrook was begun. The walls are straightened to provide more living space and there is much more glass. Many of today's chalets feature private bedrooms, private baths, screened-in porches and more. The buildings still include range, refrigerator, microwave, lighting fixtures, kitchen cabinets, loft area, central heat and air, central security system and spacious deck.

But most important is the view. Choose from golf course, woods or lake views. Some buildings feature all three. And like Ed Boyce's first A-frames, every new chalet at Innsbrook is designed to bring nature in.

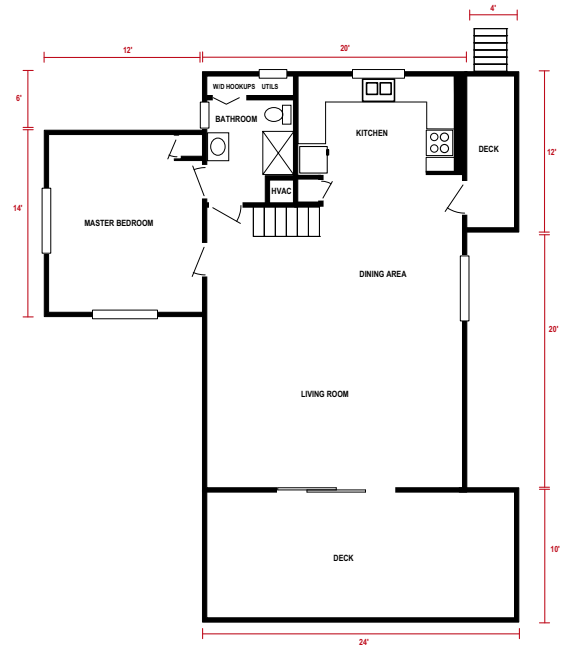
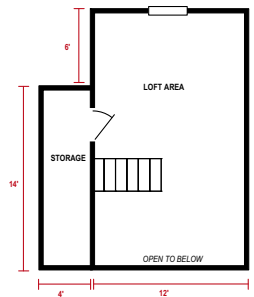
THE TREEHOUSE EFFECT

One of the great treasures of childhood is the feeling of having your own treehouse. *Privacy. Freedom. Great views.* Many of our property owners have compared the Innsbrook A-frame lifestyle to a kid and his treehouse. The Treehouse Effect puts nature on your front doorstep. Walks in the woods. The day's first catch. Quiet evenings on the beach. An afternoon on the greens. Getting reacquainted. Watching your kids grow up together.

Innsbrook is a resort community dedicated to the worthwhile. More than 7,400 acres and 100 lakes create a special refuge where families and friends go for time together. We're a thriving center of recreational and cultural activities with concerts, outdoor movies, sailing regattas, fishing tournaments, holiday brunches... the list goes on. At Innsbrook, you'll discover a lifestyle dedicated to spending time doing the things you love with the people that matter the most to you. **We invite you to experience Time Well Spent.**



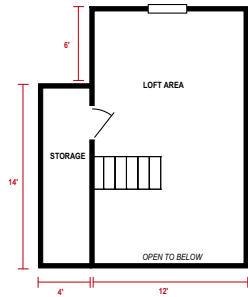
This basic A-frame design offers approx. 1,024 square feet of living space, with a master bedroom on the main level, as well as a living room, dining area, bathroom and kitchen. The loft, overlooking the living room, sleeps four. This style also includes a treated deck with seat rail.



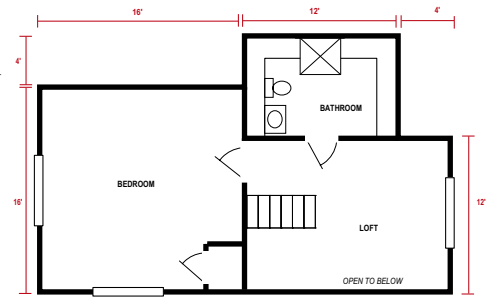
SUMMIT



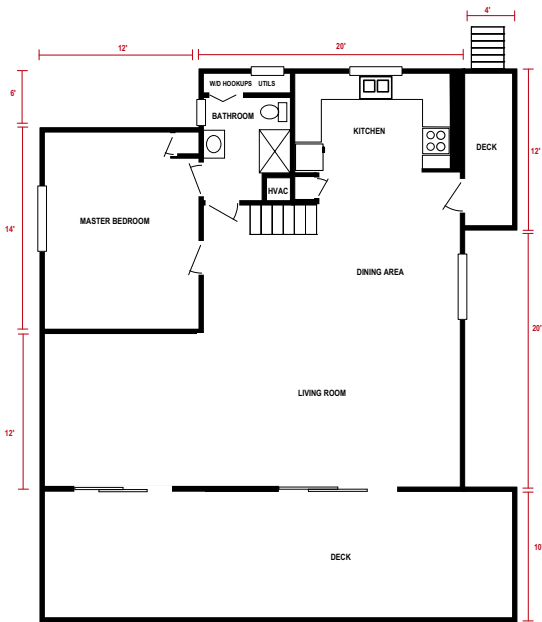
With approx. 1,168 square feet of living space, the Summit II features a master bedroom on the main level, with a large living room, dining area, bathroom and kitchen. The loft, overlooking the living room, sleeps four.



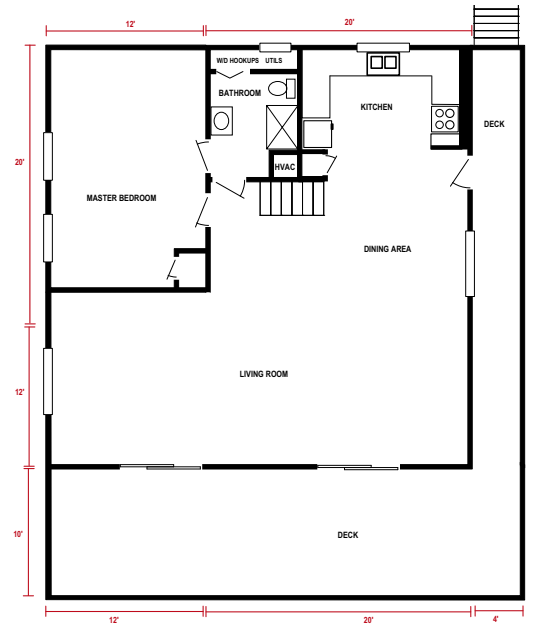
With approx. 1,750 square feet of living space, the Santa Barbara has a main-level master bedroom, living room, bathroom, dining area and kitchen. Plus, loft area with second bath and bedroom. Includes treated deck with seat rail.



SUMMIT II

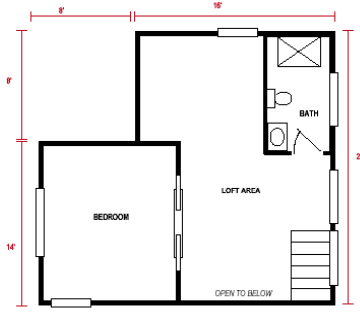


SANTA BARBARA

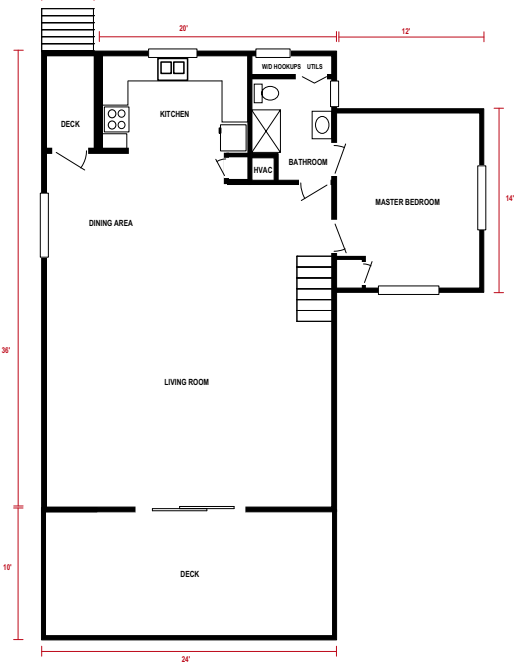




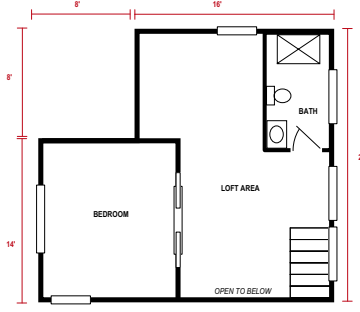
With approx. 1,460 square feet of living space, this chalet features a main-level living room, dining area, bathroom, master bedroom, and kitchen. The upper level includes a sleeping loft with a bedroom. Plus, treated deck with seat rail.



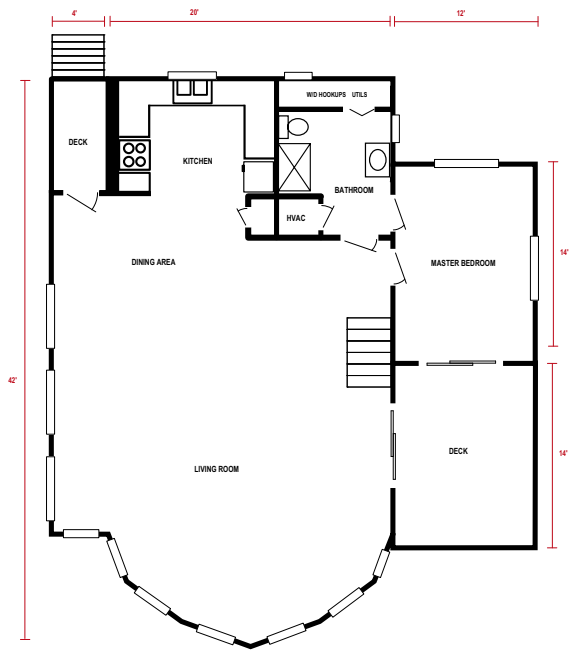
TIMBERLINE



With approx. 1,600 square feet of living space, the Alpenwald features an octagonal wall of windows in the living room. The side deck is accessible from the master bedroom and living room. Main floor includes dining area, bathroom and kitchen. The loft offers a bedroom and bath.



ALPENWALD



Dimensions are approximate; illustrations are for marketing purposes only.

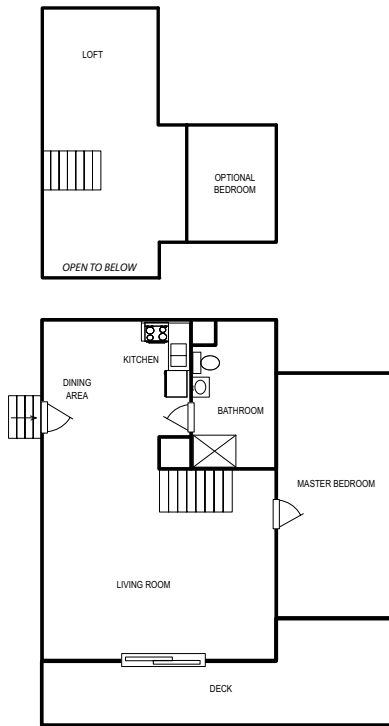
Additional Chalet Models

The models shown here are not available to be built, but are models that are included in our resale properties.
Illustrations are for marketing purposes only and representative of existing properties.



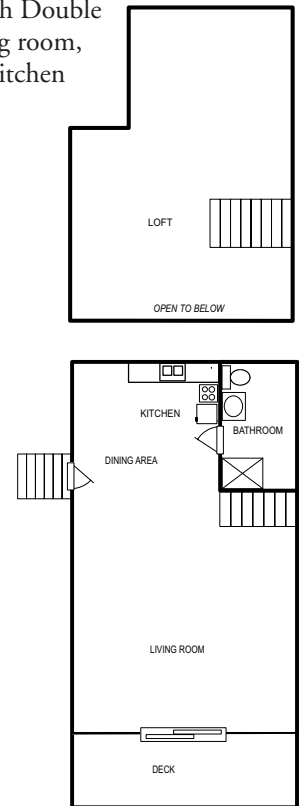
With approx. 1,120 square feet of living space, the A-frame with Bedroom Wing features a large living room, dining area, bathroom, kitchen and master bedroom on the main level. The loft sleeps four, with room for an optional bedroom.

BEDROOM WING



With approx. 948 square feet of living space, the A-frame with Double Dormer features a large living room, dining area, bathroom and kitchen on the main level. The loft sleeps four.

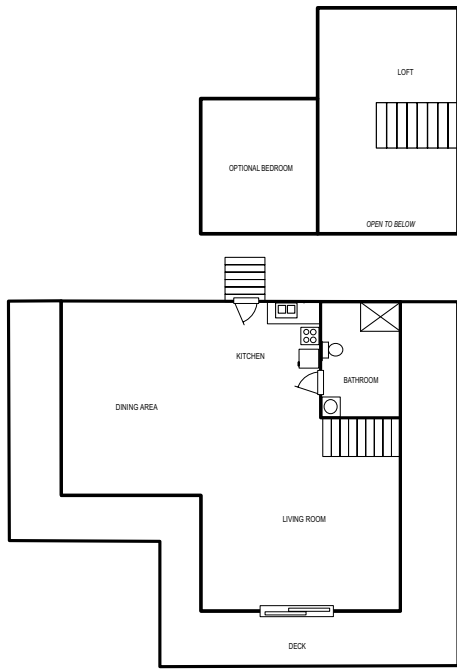
DOUBLE DORMER





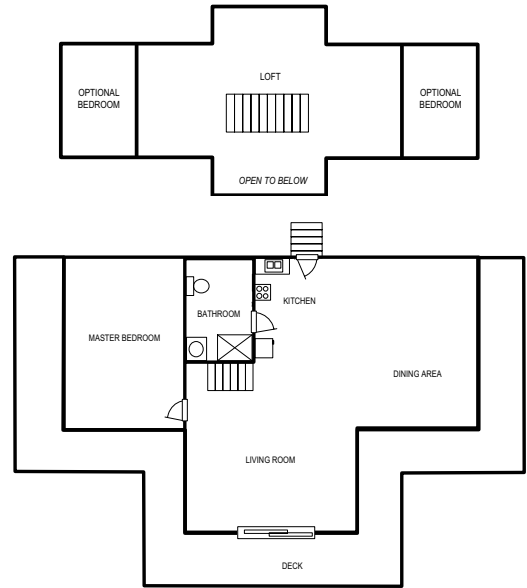
With approx. 1,480 square feet of living space, the L-frame features a large living room, dining area, bathroom and kitchen on the main level. The loft sleeps four, with room for an optional bedroom.

L-FRAME



With approx. 1,720 square feet of living space, the T-frame features a master bedroom downstairs, with a large living room, dining area, bathroom and kitchen. The loft sleeps four, with room for two optional bedrooms.

T-FRAME



The models shown here are not available to be built, but are models that are included in our resale properties.
Illustrations are for marketing purposes only and representative of existing properties.